



Safe, Resilient NYC

September 21, 2021



Office of Community Schools
Office of Equity and Access
Office of Safety and Youth Development
Office of School Health
Office of School Wellness Programs
Public Schools Athletic League



SAFE, RESILIENT NYC

2018-2019

2019-2020

2020-2021

2021-2022

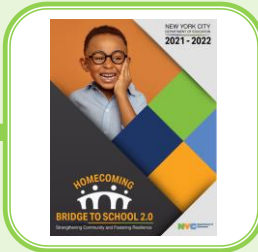
SEF AND DSCW
EXPANSION

- Supportive Environment Framework
- Expanded social-emotional learning programming
- + 250 RULER schools
- K-5 Physical Ed. & Health Scope & Sequence
- 100+ coordinators for students in temporary housing

- 242 Harmony schools
- RJ expansion to 311 schools
- 68 Crisis Social Workers(School Response Clinicians) and supervisors hired
- New discipline code
- Expanded social workers for students in temporary housing

- + 200 Harmony schools
- +300 new Wellness Councils
- 75,000+ staff and community members trained in Trauma-Informed Care and Healing Centered Engagement
- Expansion of Youth-Adult Partnership

- SEL-Academic Integration
- Hiring of 500 Social Workers
- SEL Screeners
- Expansion of Community Schools
- Expansion of Restorative Practices and Harmony
- Culturally Responsive Sustaining Education

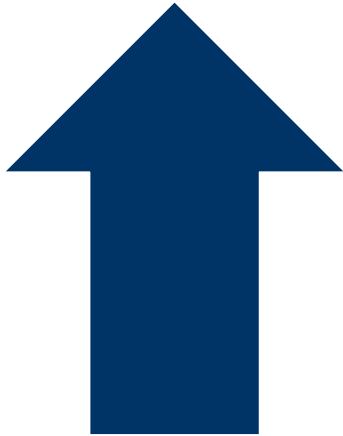


COVID-19 RESPONSE

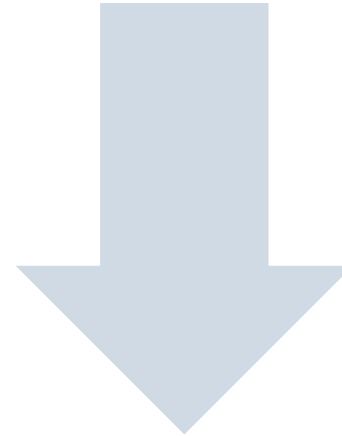
- Trauma 101 & Support the Supporter
- TREP training for school leaders
- Online TREP platform
- Parent coordinator training
- SEL Resources for Regional Enrichment Centers and Remote Learning sites

- Bridge to School Curriculum Resources
- Adult SEL
- Child Mind Institute Partnership: Professional Learning & Classroom Resources
- School Mental Health Specialists in schools
- Health & Hospitals partnership
- Family & Community Wellness Collective: 800+ Family Healing Ambassadors

Promising Results



- Expanded universal Tier 1 programming
- Increased social work staffing
- Supported students with intensive support through our School Response Clinician model
- Increased graduation rates, math achievement, and student attendance through Community Schools
- Introduced extensive adult SEL resources and support



Since SY13-14

- 39% decrease in out of school suspensions
- 98% decrease in suspensions of K-2
- Reduction in average length of suspension, with significant decrease in racial disparities
- Decrease in school arrests

Safe, Resilient NYC



Every school will implement social-emotional learning (SEL) assessments as a means to check-in with students and provide data-driven tiered intervention services by spring 2022.



Why DESSA?

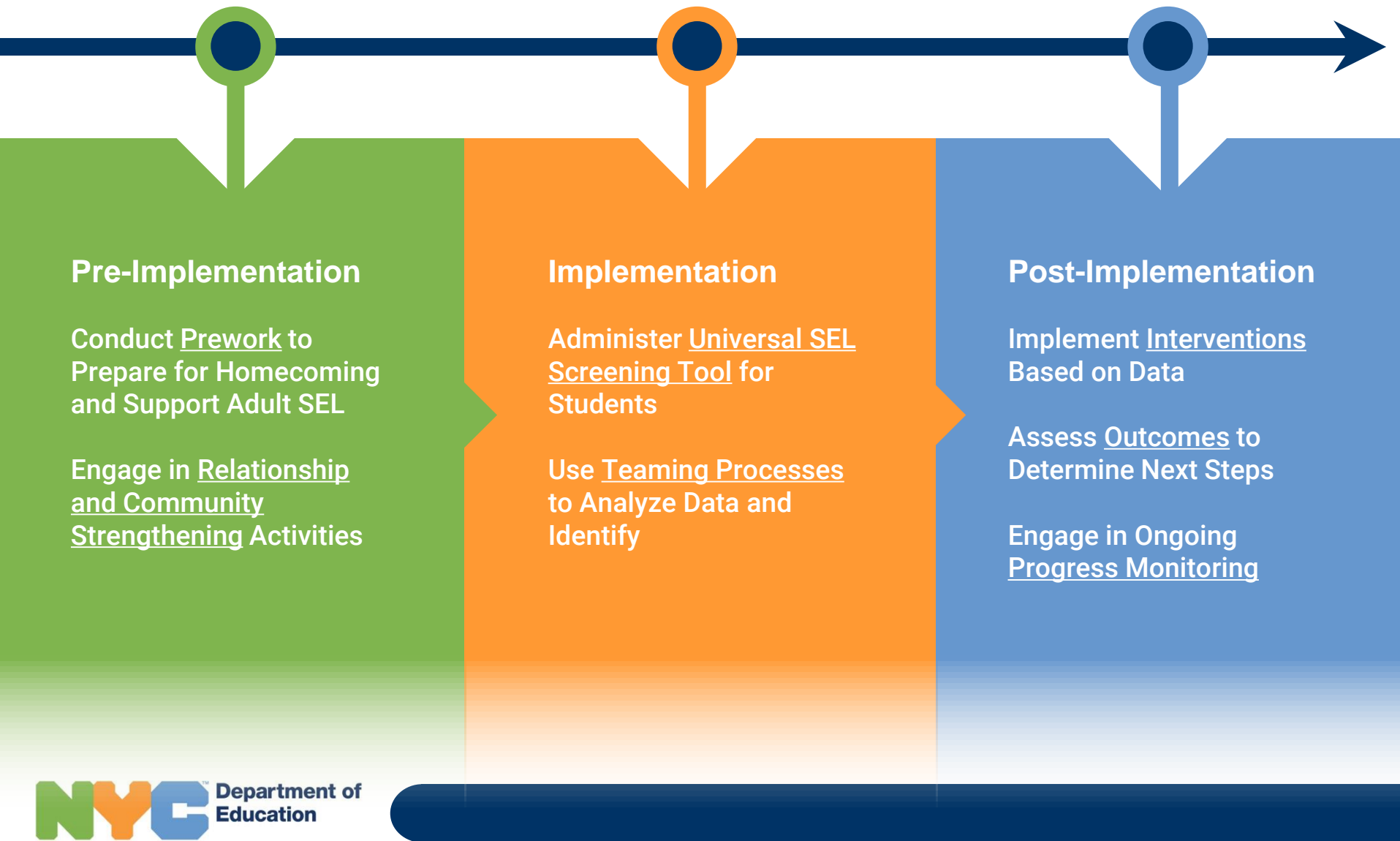
CASEL identified and evaluated 73 screening instruments to determine whether or not to recommend them for school-wide assessment (*sound psychometric properties, suitable for program evaluation, readily available for schools to access and obtain information on, and not designed to assess specific programs*)

Of the 73 instruments reviewed, 10 met the criteria for inclusion in their summary report.

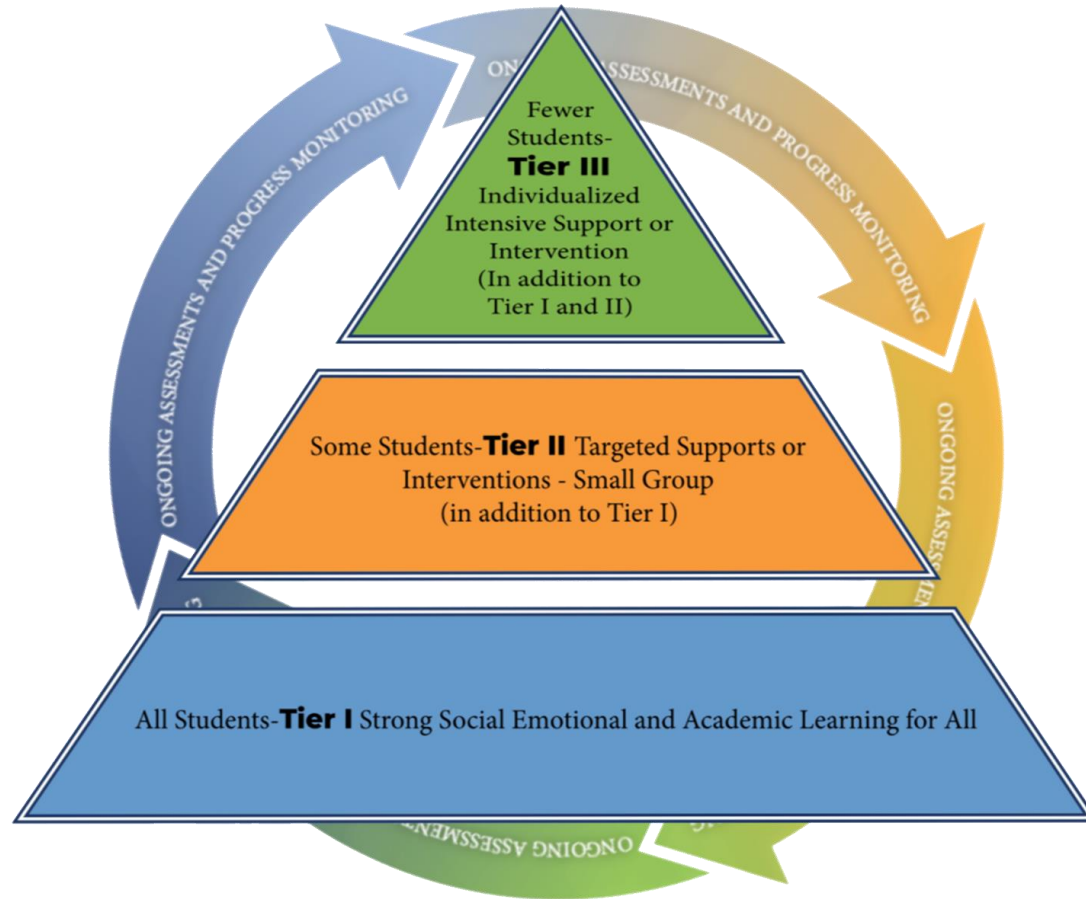
Of those 10, only 1 (DESSA) was a purely strengths-based assessment.



Process for 2021 - 2022



Multi-Tiered System of SEL Supports



[Link](#)

Family and Community Wellness



- 800+ Family Healing Ambassadors citywide
- Capacity building through professional learning and resource sharing
- Partnership with national content leaders: Dr. Shawn Ginwright and the University of Chicago's TREP Project
- Live translation into 9 DOE official languages
- Families facilitating workshops and resources at their schools

THANK YOU!



Questions? Comments? Feedback?

DivisionofSchoolClimateandWellness@schools.nyc.gov